

Alaska Department of Fish and Game

Habitat Section
Southeast Region



192-30-10100-2010

ADDITION

Water body name: Iron Creek

Quad: Bering Glacier A-4

Upper Reach Latitude: 60.095073 **Longitude:** -142.470410

Lower Reach Latitude: 60.094469 **Longitude:** -142.473235

Survey date: 6/16/2024

Species & Lifestage: COP

Survey crew: NJ, GA, FC

Findings: We surveyed this cataloged stream using a backpack electrofisher and GPS and captured juvenile coho salmon and stickleback. This stream is primarily comprised of fine organic material and meanders through grassy openings and forest. We caught coho up to a head cut at waypoint 316. The head cut is about 1 ft and may only pass fish during high water. Fish habitat likely continues upstream (Table 1; Figures 1–3).

Recommendations: Extend upper extent of Stream No. 192-30-10100-2010 in the anadromous waters catalog to waypoint 316 (Figure 4).

Nomination: Pending

Table 1.–192-30-10100-2010 survey data.

Waypoint	Latitude	Longitude	Notes	Stream Width ft	Stream Substrate	Habitat Features	Gradient %	Sample Effort	Sample Results
313	60.095110	-142.472104	Confluence of Iron Creek and river-right tributary. Following main channel upstream.	6-8	Fine Organic		1-2		
314	60.095181	-142.471511						EF	3 SB
315	60.095207	-142.471299						EF	2 CO
316	60.095076	-142.470433		4-6	Fine Organic		2-4	EF	2 CO



Figure 1.–Juvenile coho caught at waypoint 315.



Figure 2.—Head cut, looking upstream at waypoint 316.



Figure 3.—Downstream at waypoint 315.

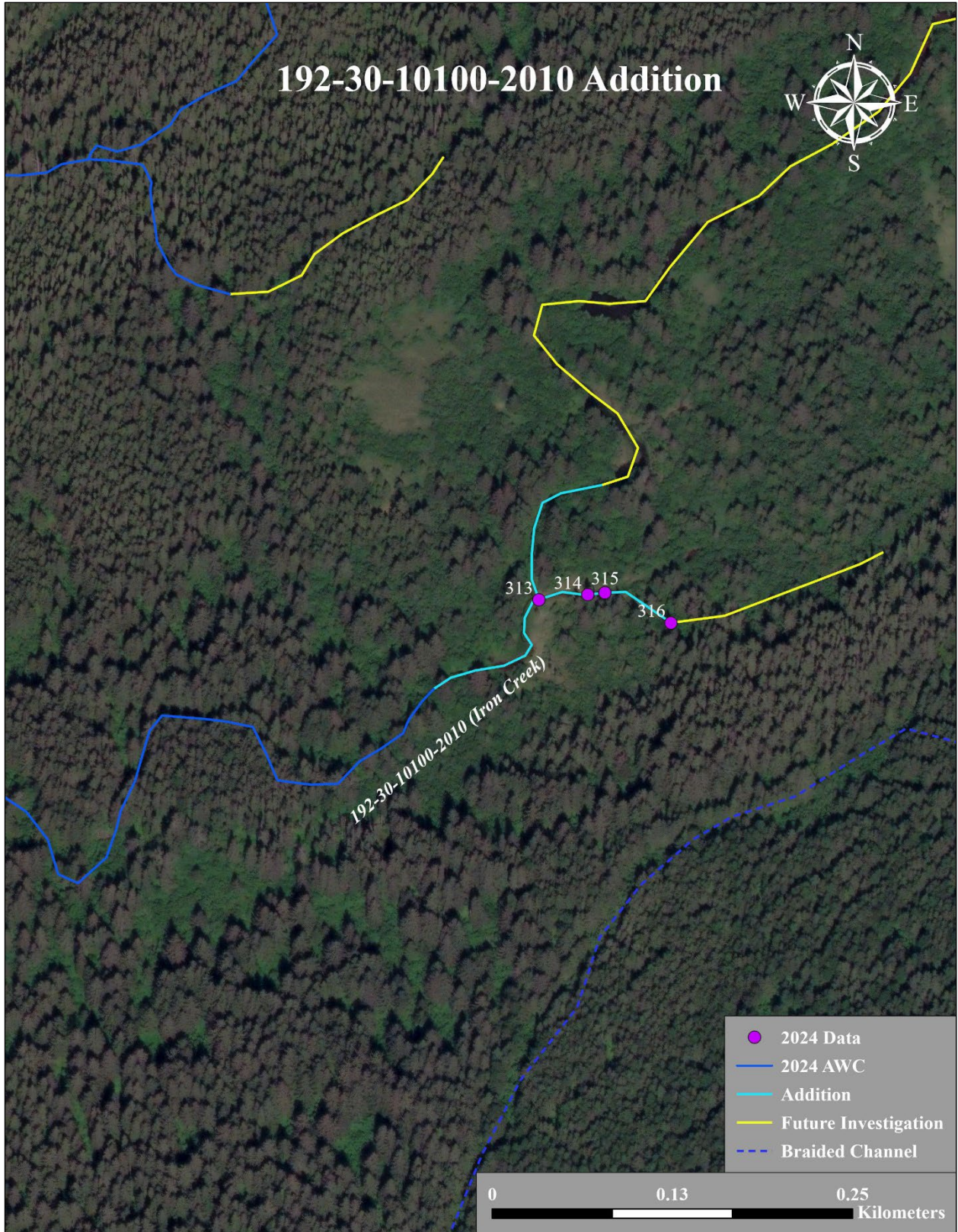


Figure 4. 192-30-10100-2010 addition map.